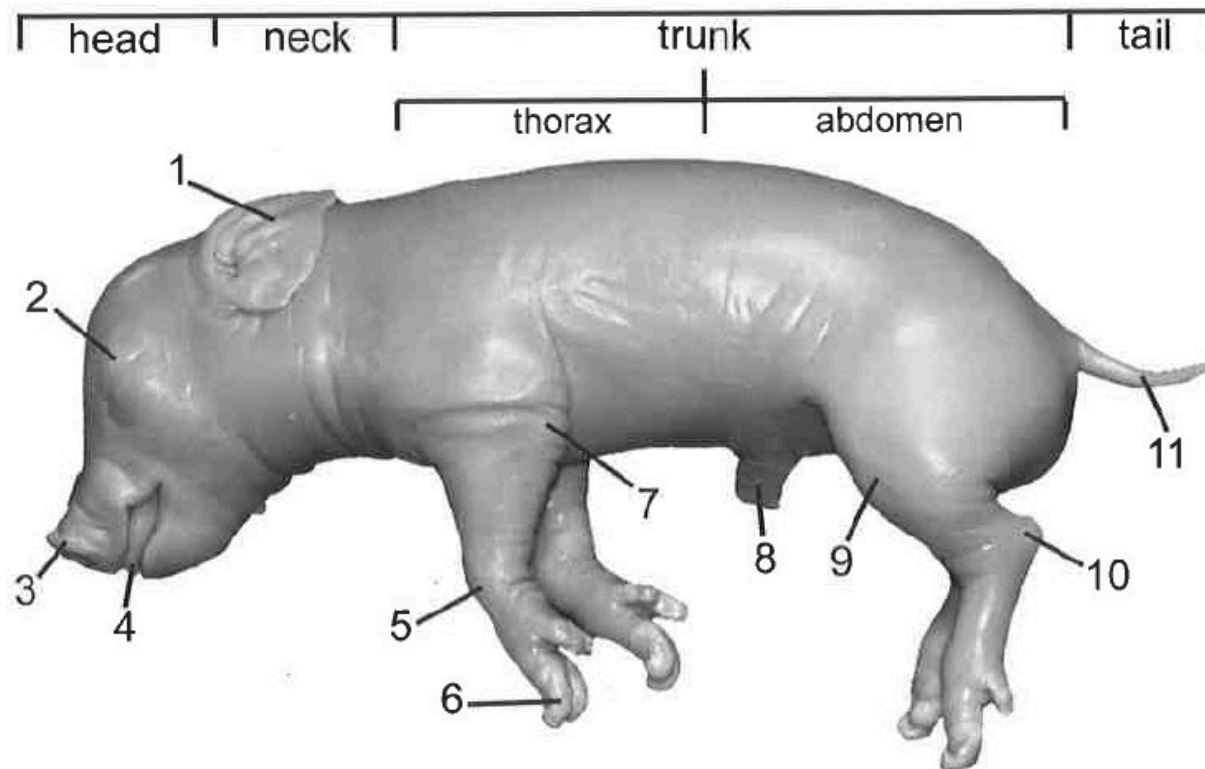


EXTERNAL FEATURES

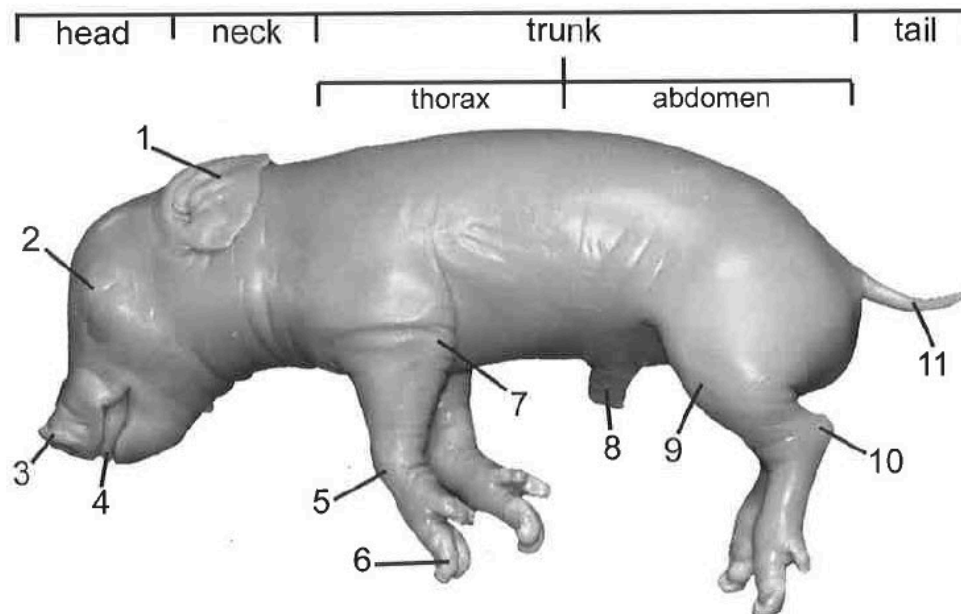
- The body is composed of **head**, **neck**, **trunk**, and **tail**.
 - ✓ The trunk is divided into two parts:
 - **Thorax** and the **abdomen**



1-external ears / pinnae; 2-eyelid; 3-snout with nares; 4-tongue; 5-wrist; 6-hoof; 7-elbow; 8-umbilical cord; 9-knee; 10-ankle; 11-tail

EXTERNAL FEATURES

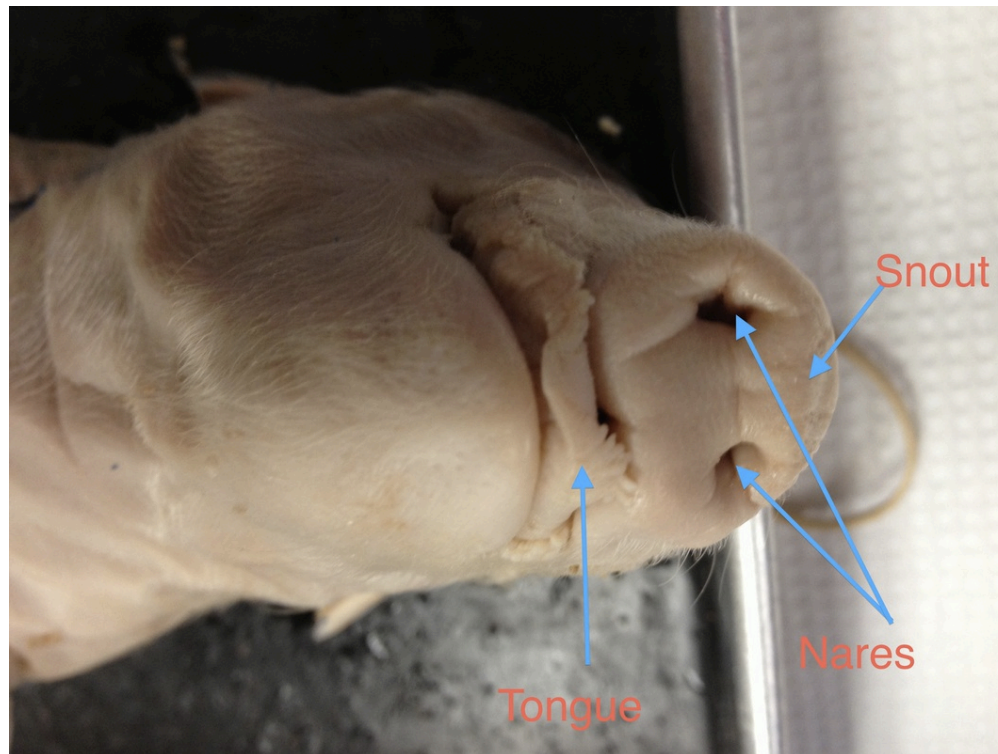
- On the head there are:
 - ✓ fleshy, external ears called **pinnae**
 - ✓ eyes with the upper and lower **eyelids**
 - ✓ snout with external **nares** (nostrils)
 - ✓ **tongue** edged with papillae



1-external ears / pinnae; 2-eyelid; 3-snout with nares; 4-tongue; 5-wrist;
6-hoof; 7-elbow; 8-umbilical cord; 9-knee; 10-ankle; 11-tail

EXTERNAL FEATURES

- The snout is cartilaginous and contains the nares for the passage of air. The end of the snout is strengthened by a bony region to allow the pig to dig into the soil in search for food. The snout also serves to house many olfactory receptors that give the pig an efficient sense of smell.



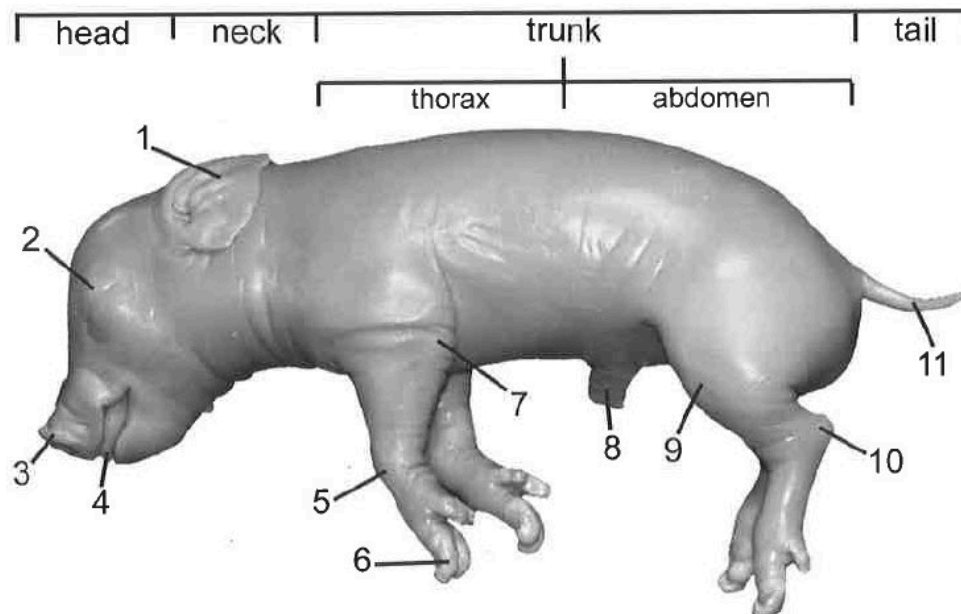
EXTERNAL FEATURES

- Appendages:
 - ✓ The pig is an **ungulate** in which the weight of the body is borne on the tips of the **digits (toes)** which are in the form of a **hoof**.
 - ✓ The first digit of both forelimbs and hindlimbs is absent and the second and the fifth digits are reduced in size.
 - ✓ The only fully functional digits are the third and fourth.



EXTERNAL FEATURES

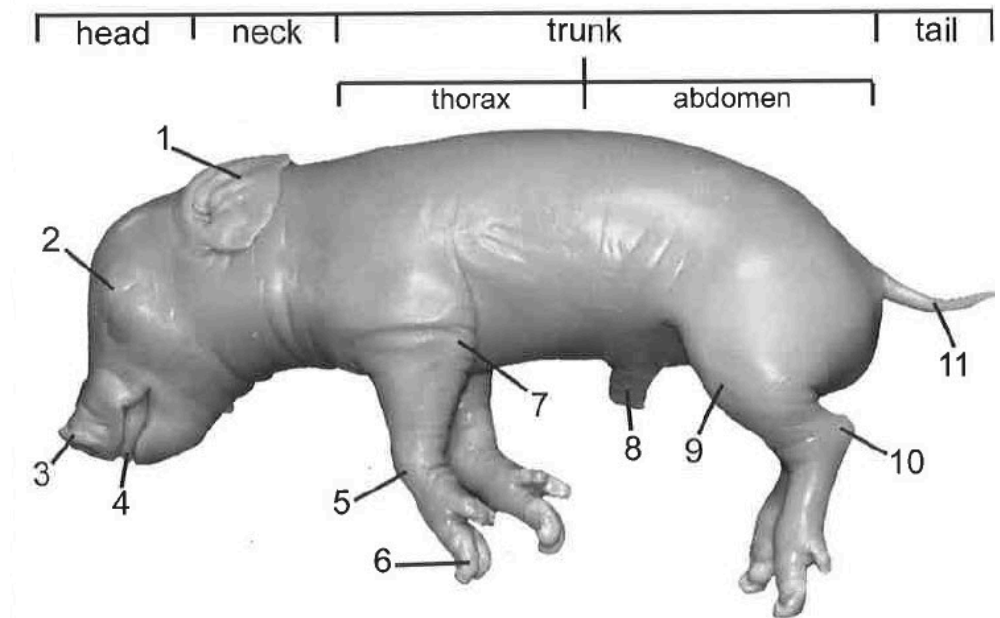
- Forelimb Appendages:
 - ✓ **wrist** lies superior to the hoof (digits)
 - ✓ **elbow** is a bony protuberance on the posterior side of the leg
 - ✓ **shoulder** is superior to the elbow



1-external ears / pinnae; 2-eyelid; 3-snout with nares; 4-tongue; 5-wrist; 6-hoof; 7-elbow; 8-umbilical cord; 9-knee; 10-ankle; 11-tail

EXTERNAL FEATURES

- Hindlimb Appendages:
 - ✓ **ankle** is a bony protuberance on the posterior side of the leg
 - ✓ **knee** is on the anterior side of the leg superior to the ankle
 - ✓ dorsal to the knee is the **hip**, a bony mass close to the middorsal line

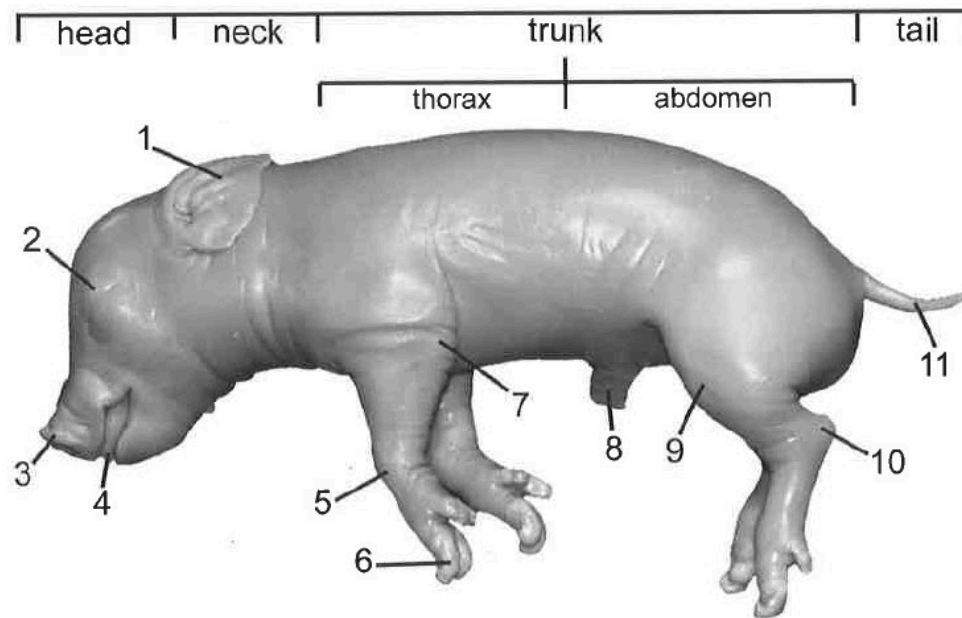


1-external ears / pinnae; 2-eyelid; 3-snout with nares; 4-tongue; 5-wrist; 6-hoof; 7-elbow; 8-umbilical cord; 9-knee; 10-ankle; 11-tail

EXTERNAL FEATURES

- **Umbilical Cord:**

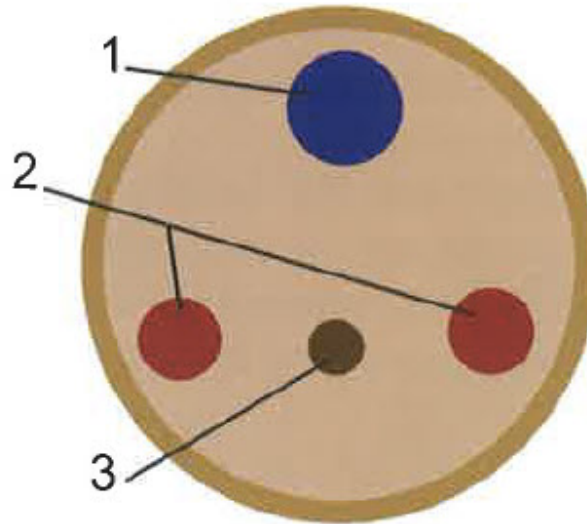
- ✓ The cut umbilical cord is on the ventral portion of the abdomen.
- ✓ During fetal life, the cord with its contained blood vessels connects the fetus to the placenta on the uterine wall of the female.



1-external ears / pinnae; 2-eyelid; 3-snout with nares; 4-tongue; 5-wrist; 6-hoof; 7-elbow; 8-umbilical cord; 9-knee; 10-ankle; 11-tail

EXTERNAL FEATURES

- **Umbilical Cord:**
 - ✓ Highly oxygenated blood is transferred to the fetus through the **umbilical vein**.
 - ✓ Partially oxygenated blood is removed from the fetus through the **umbilical arteries**.
 - ✓ Metabolic wastes are removed through the **allantoic duct** which is connected to the fetus' allantoic bladder.



1-umbilical vein; 2-umbilical arteries; 3-allantoic duct

EXTERNAL FEATURES

1. Locate the external features of your fetal pig.
 - Record your observations in your dissection journal.
2. With your scissors, cut off a small portion of the umbilical cord to locate and identify the key structures.
 - Record your observations in your dissection journal.