

# Medical Terminology

- The words (terms) which make up the language of medicine are referred to as **medical terminology**.
- Most medical terms come from the **Greek** and **Latin** languages.

# Medical Terminology

- Most medical terms can be broken down into components:

**Prefix** / **Word Root** / **Suffix**

- **Prefix** = word component placed in front of a root/word to change or modify its meaning
- **Word Root** = basic element of a word; foundation on which the meaning of the med term is built
- **Suffix** = word component added to the end of root/word that changes or modifies its usage, function, or meaning.

# Medical Terminology

- Each unit we will learn a set of medical terminology components
- You are responsible to complete the medical terminology table using an example from the unit
- You will be assessed on the meaning of the word component at the end of the unit

# Medical Terminology

- **ante-**

- ✓ before, preceding

- **cran-**

- ✓ helmet

- **dors-**

- ✓ back

- **homeo-**

- ✓ same

# Medical Terminology

- **later-**

✓ side

- **medi-**

✓ middle

- **post-**

✓ after, behind

- **super-**

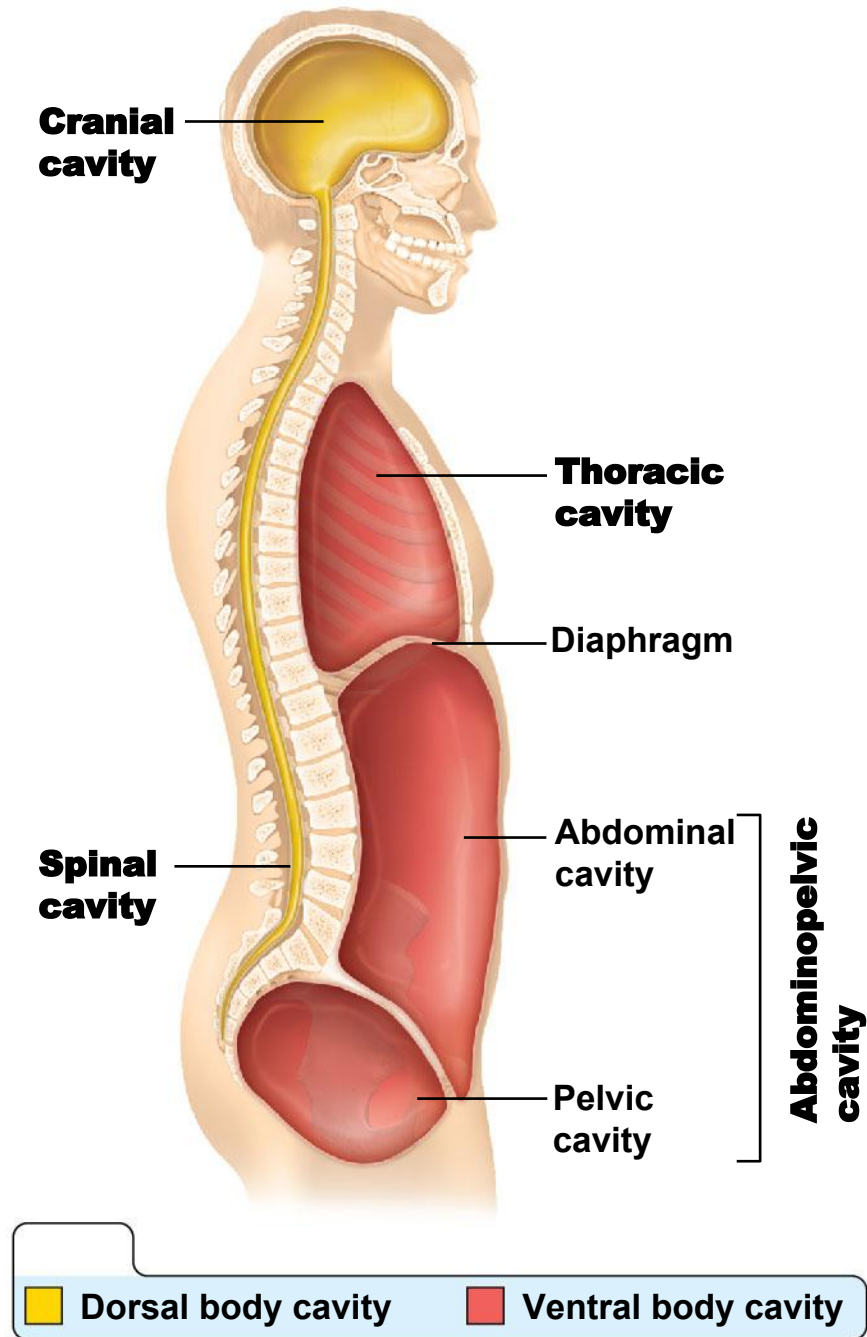
✓ above

# Medical Terminology

- **ventr-**
  - ✓ abdomen
- **-logy**
  - ✓ study of
- **-stasis**
  - ✓ standing still
- **-tomy**
  - ✓ cutting

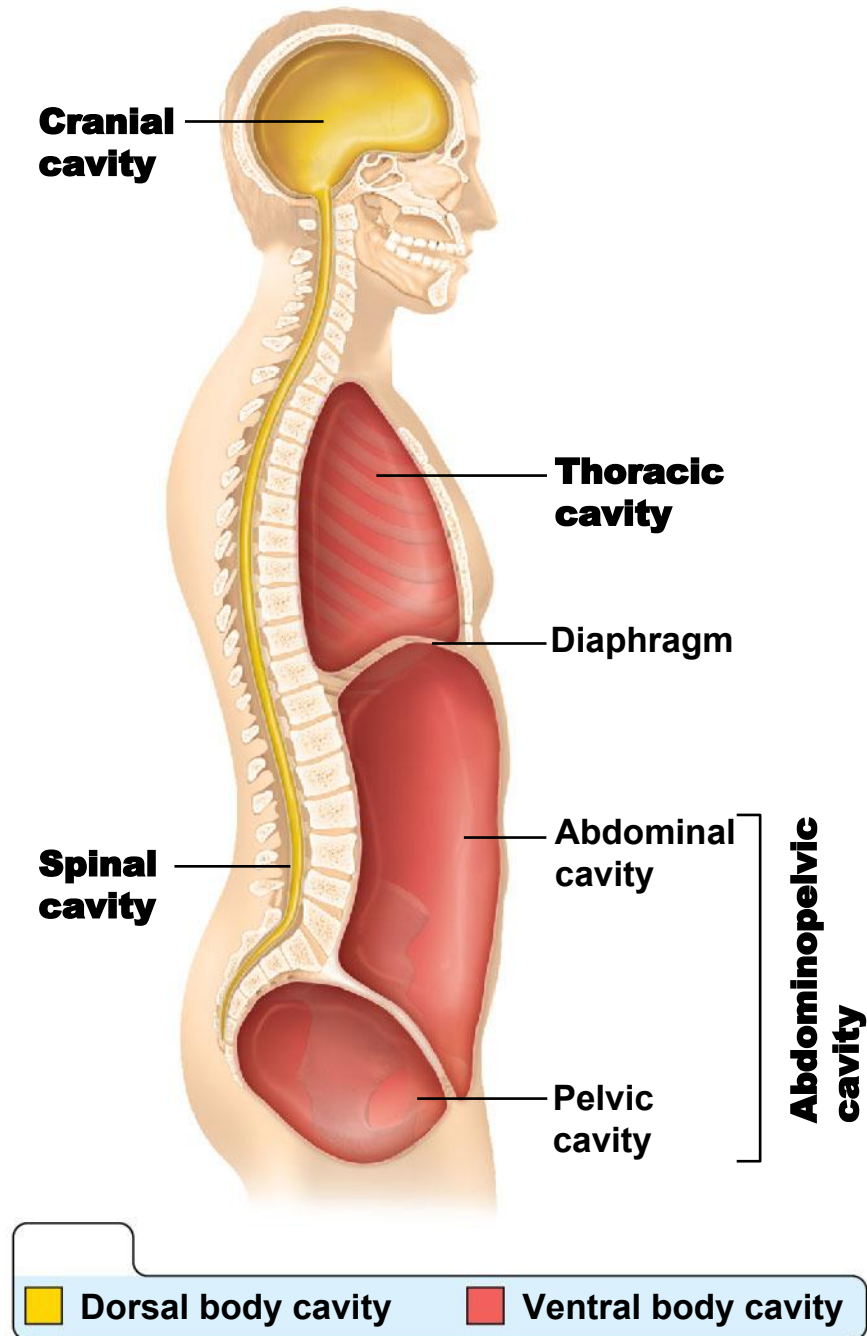
# Body Cavities

- Two main internal body cavities
  - Dorsal Cavity
  - Ventral Cavity
- Body cavities provide varying degrees of protection to organs within them



# Body Cavities

- Dorsal body cavity has two subdivisions:
  1. **Cranial cavity**
    - Houses the **brain**
    - Protected by the **skull**
  2. **Spinal cavity**
    - Houses the **spinal cord**
    - Protected by the **vertebrae**



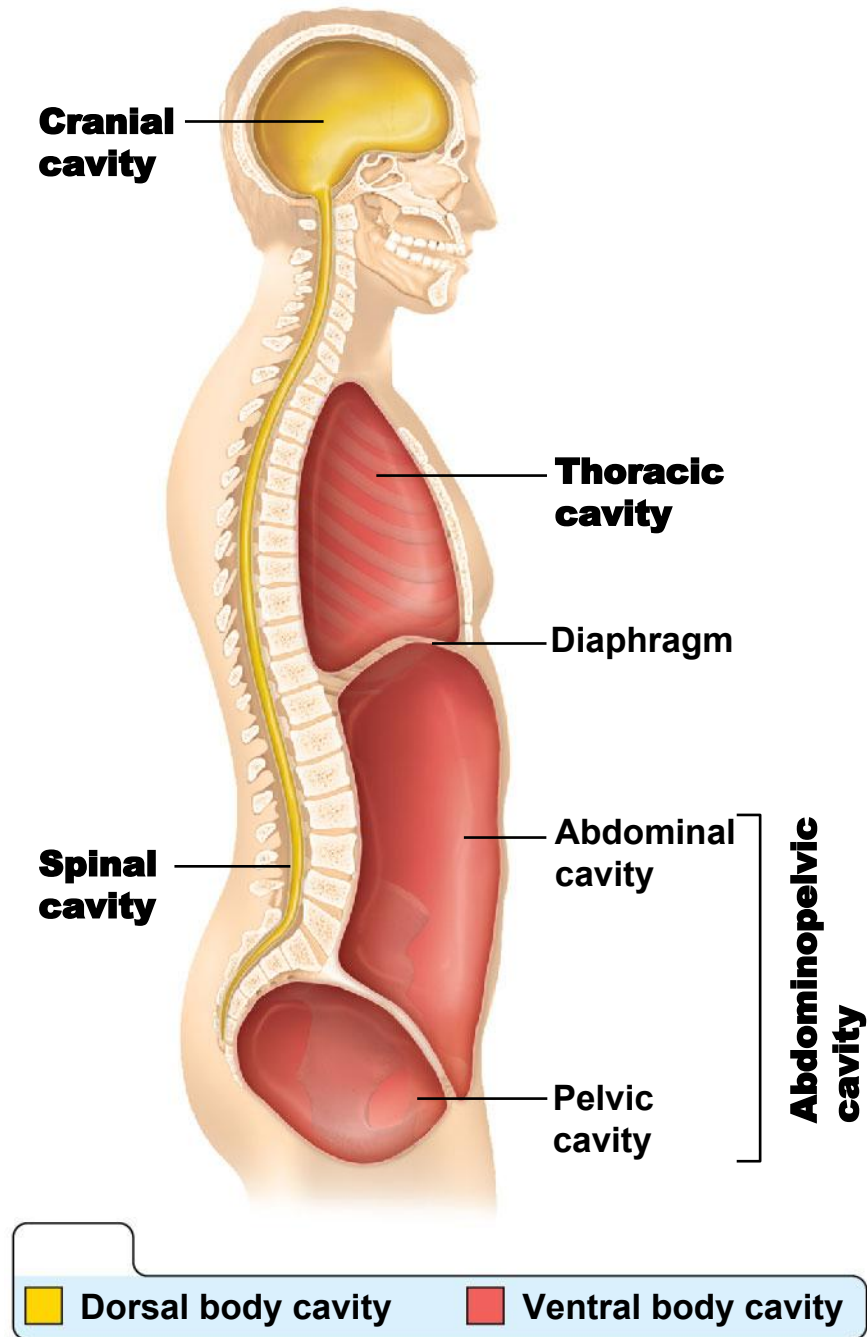


# Body Cavities

- Ventral body cavity has two subdivisions separated by the diaphragm

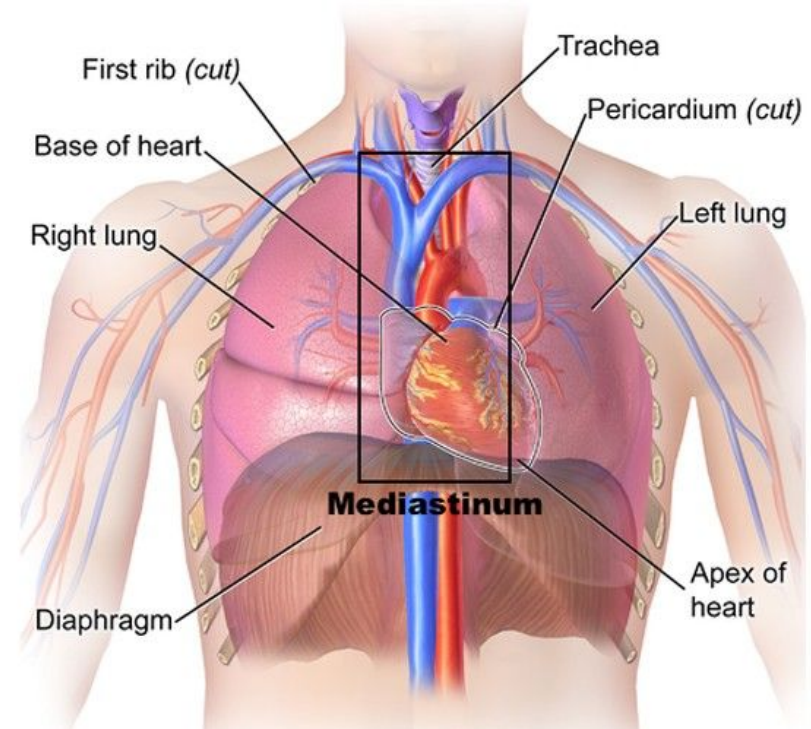
## 1. Thoracic cavity

## 2. Abdominopelvic cavity



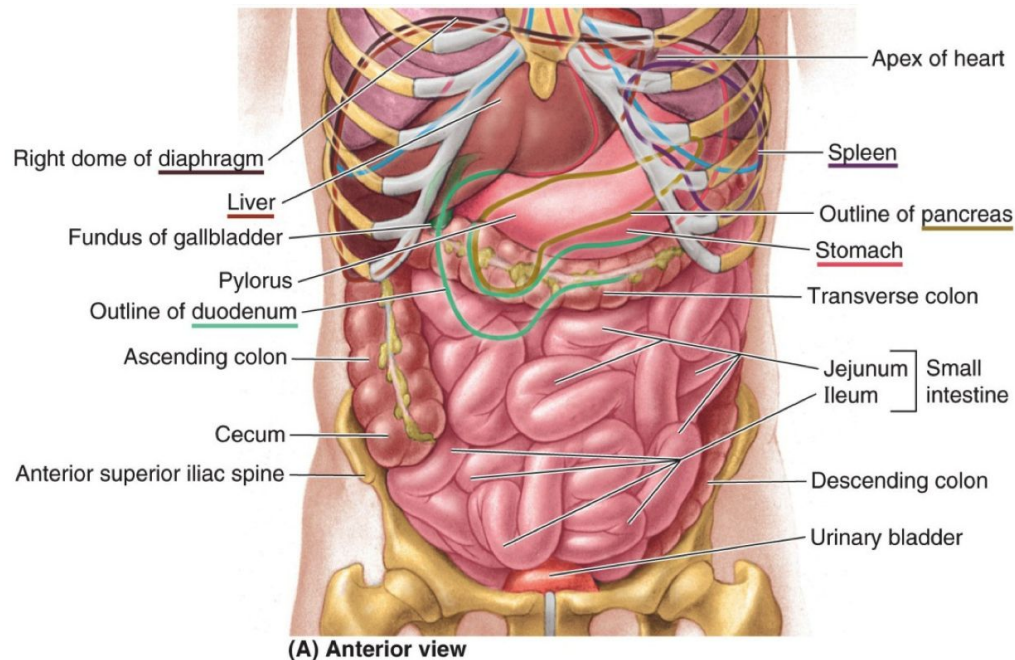
# Body Cavities

- Thoracic cavity
  - Cavity **superior** to the diaphragm
  - Houses **heart, lungs, and other organs**
  - **Mediastinum** (central region) houses the heart, trachea, and other organs
  - Protected by the **rib cage**



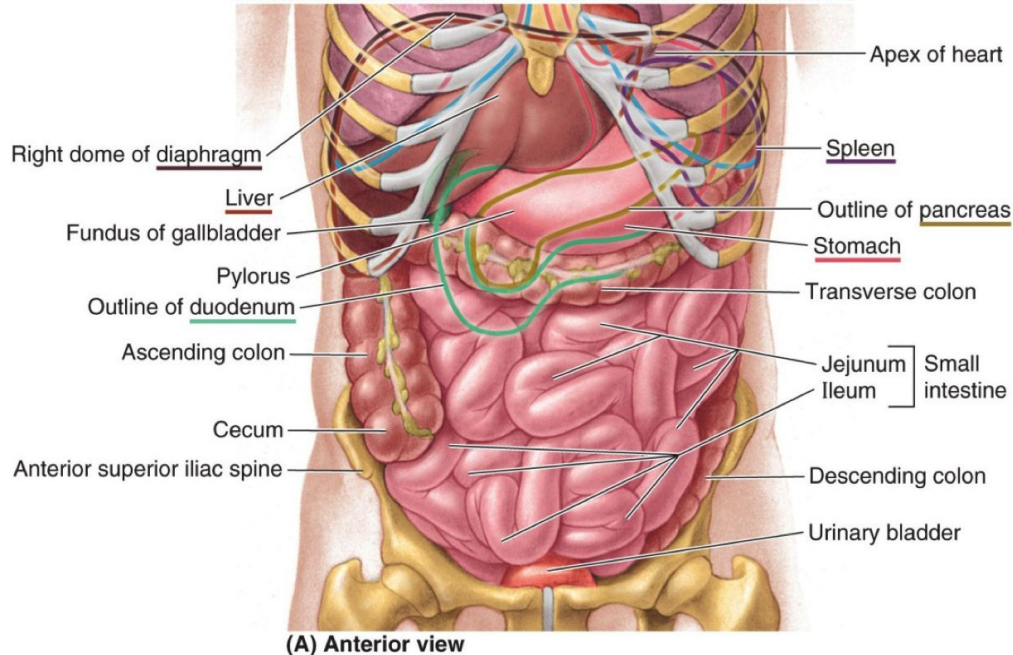
# Body Cavities

- Abdominopelvic cavity
  - Cavity **inferior** to the diaphragm
  - Superior abdominal cavity houses the **stomach, liver, and other organs**
  - Protected only by **trunk muscles**



# Body Cavities

- Abdominopelvic cavity
  - Inferior pelvic cavity houses the reproductive organs, bladder, and rectum
  - Protected somewhat by bony pelvis



# Body Cavities

- Abdominopelvic cavity
  - No physical structure separates abdominal from pelvic cavities

