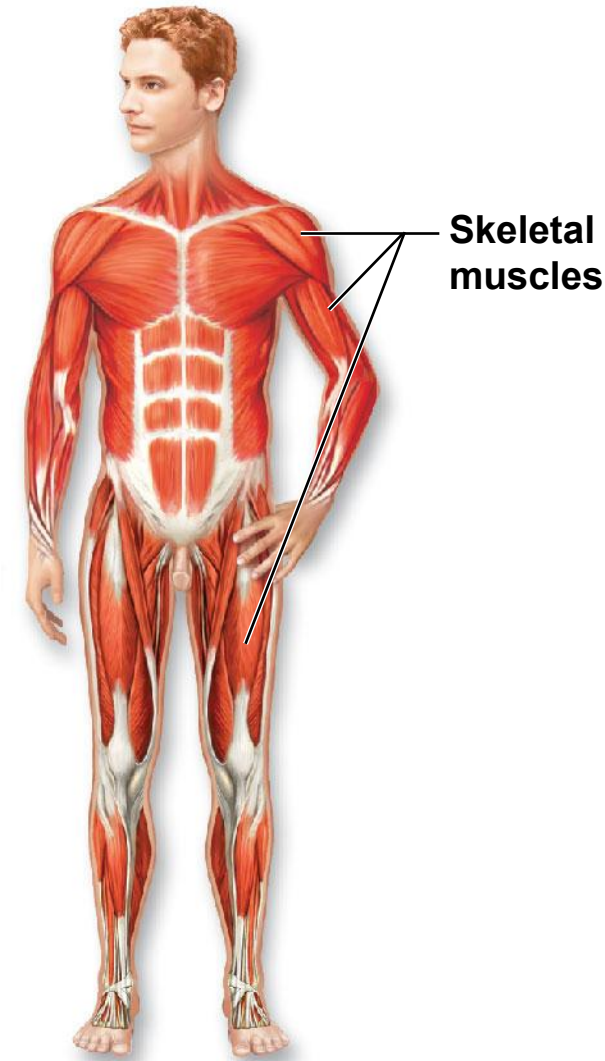


Muscular System

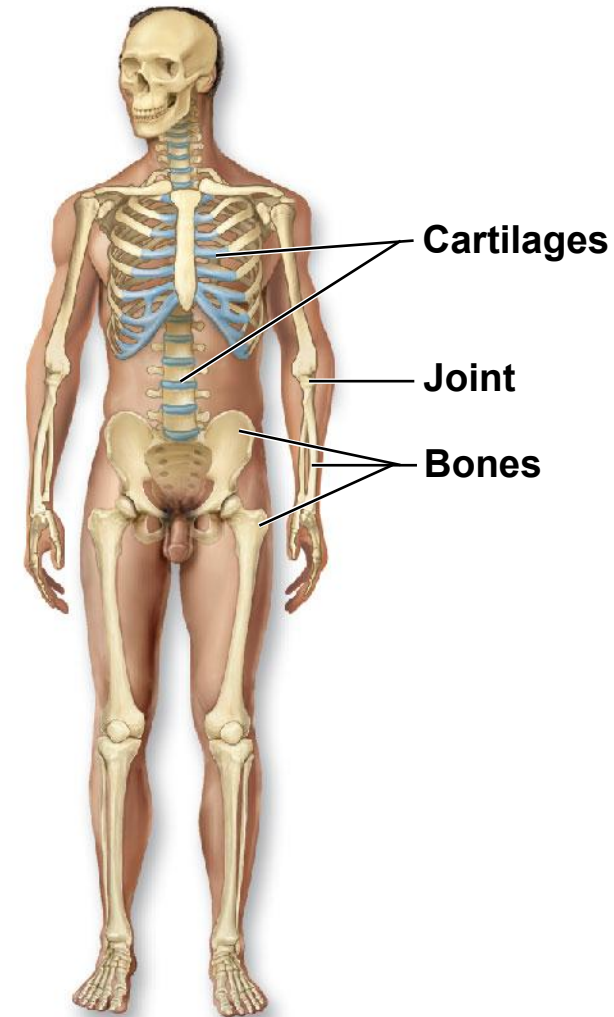
- Structures
 - **Skeletal muscle, smooth muscle, and cardiac muscle**
- Function
 - **Allows for movement, locomotion and facial expression**
 - **Maintains posture**
 - **Generates heat**



Muscular System

Skeletal System

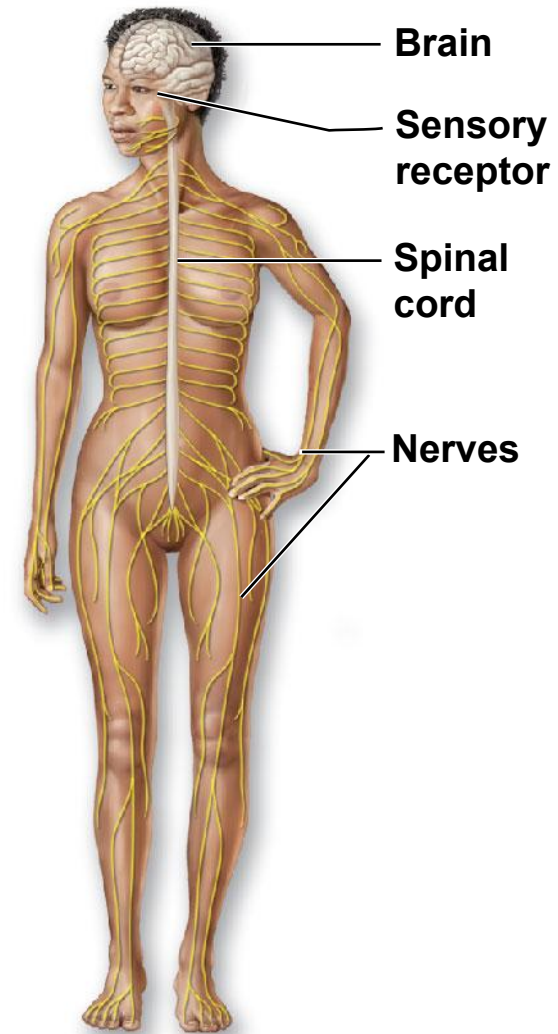
- Structures
 - **Bones, cartilages, and joints**
- Function
 - **Protects and supports body organs**
 - **Provides framework for muscle attachment**
 - **Forms blood cells**
 - **Stores minerals**



Skeletal System

Nervous System

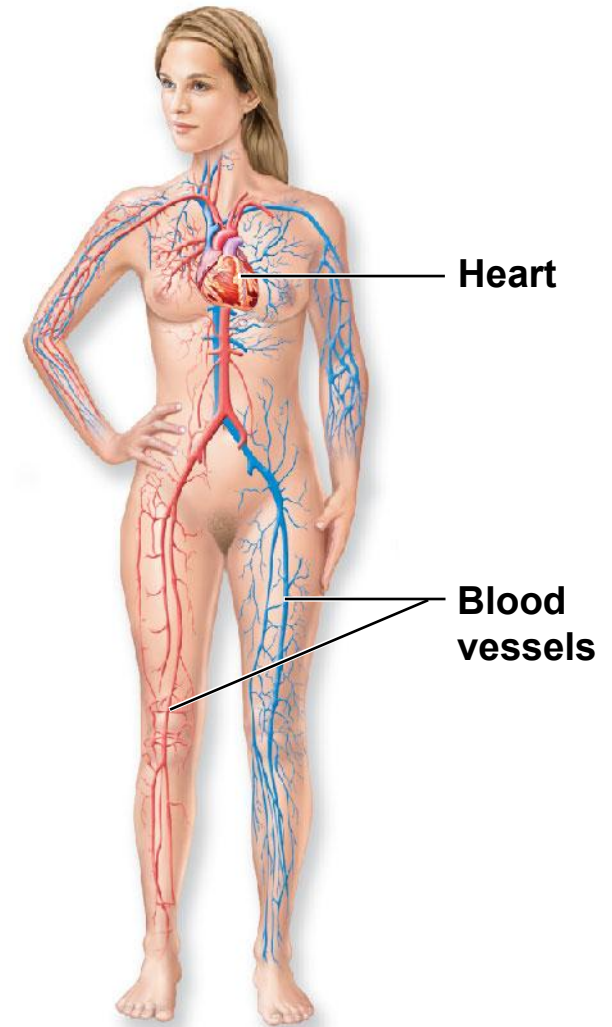
- Structures
 - **Brain, spinal cord, nerves**
- Function
 - **Fast-acting control system**
 - **Responds to internal and external stimuli**



Nervous System

Cardiovascular System

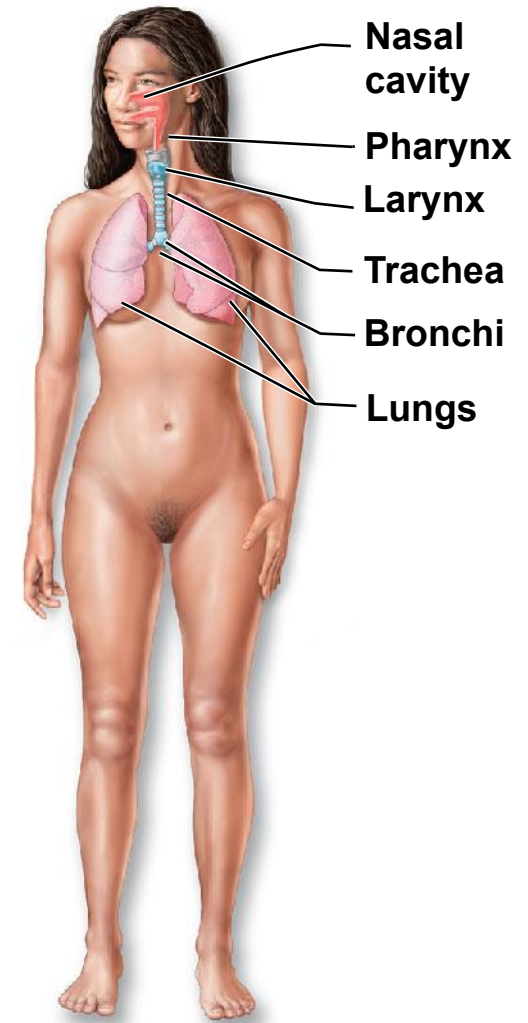
- Structures
 - **Heart, blood vessels, blood**
- Functions
 - **Distributes blood carrying oxygen, carbon dioxide, nutrients, and waste**



Cardiovascular System

Respiratory System

- Structures
 - **Nasal cavity, pharynx, larynx, trachea, and lungs**
- Function
 - **Exchanges gases between air and blood**



Respiratory System

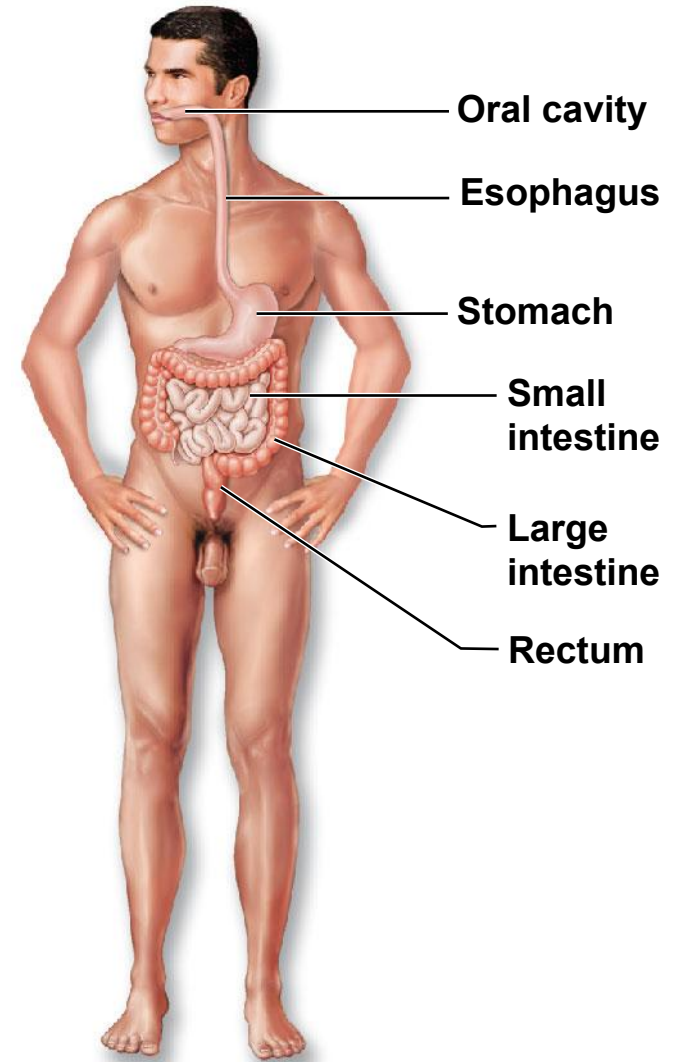
Digestive System

- Structures

- Oral cavity, esophagus, liver, stomach, small and large intestines, rectum, and anus

- Functions

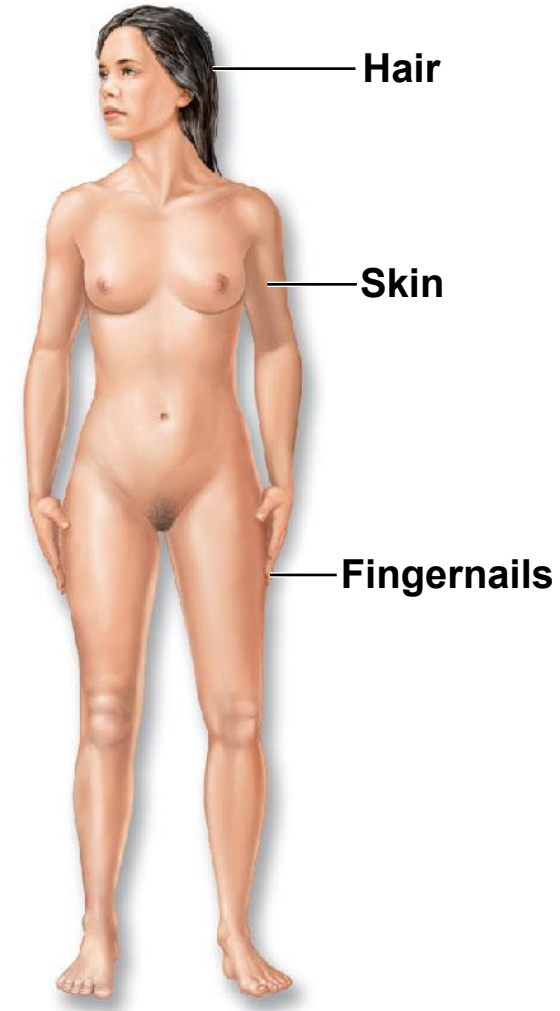
- Breaks down food
- Absorbs food components into the blood
- Eliminates indigestible foodstuffs



Digestive System

Integumentary System

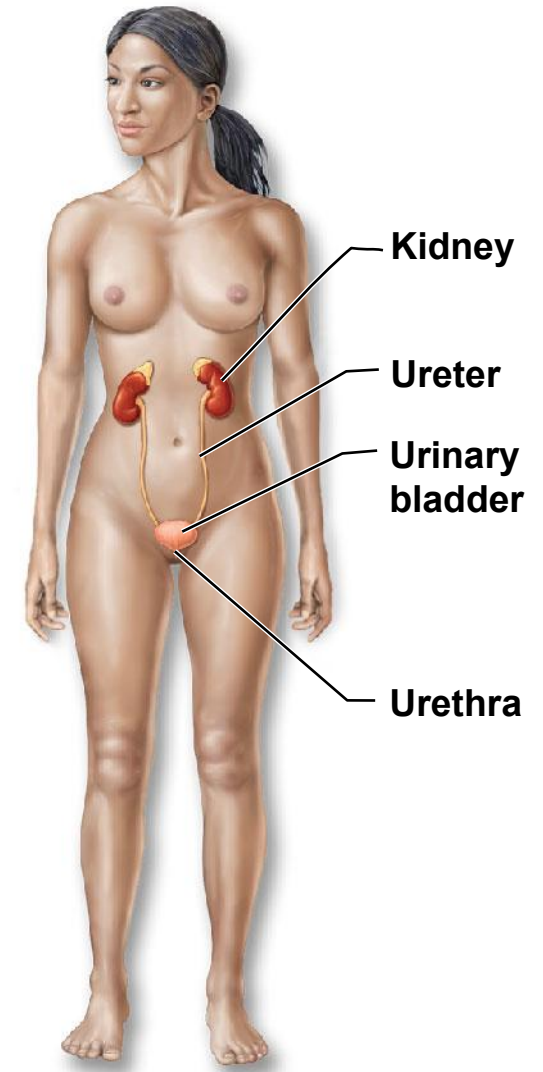
- Structures
 - **Skin, hair, fingernails**
- Function
 - **Protects deeper tissues**
 - **Synthesizes vitamin D**
 - **Houses receptors for pain, pressure, and temperature**
 - **Houses sweat and sebaceous glands**



Integumentary System

Urinary System

- Structures
 - **Kidneys, ureters, urinary bladder, and urethra**
- Function
 - **Eliminates nitrogenous wastes from the body**
 - **Regulates water, electrolyte and acid-base balance of the blood**



Urinary System

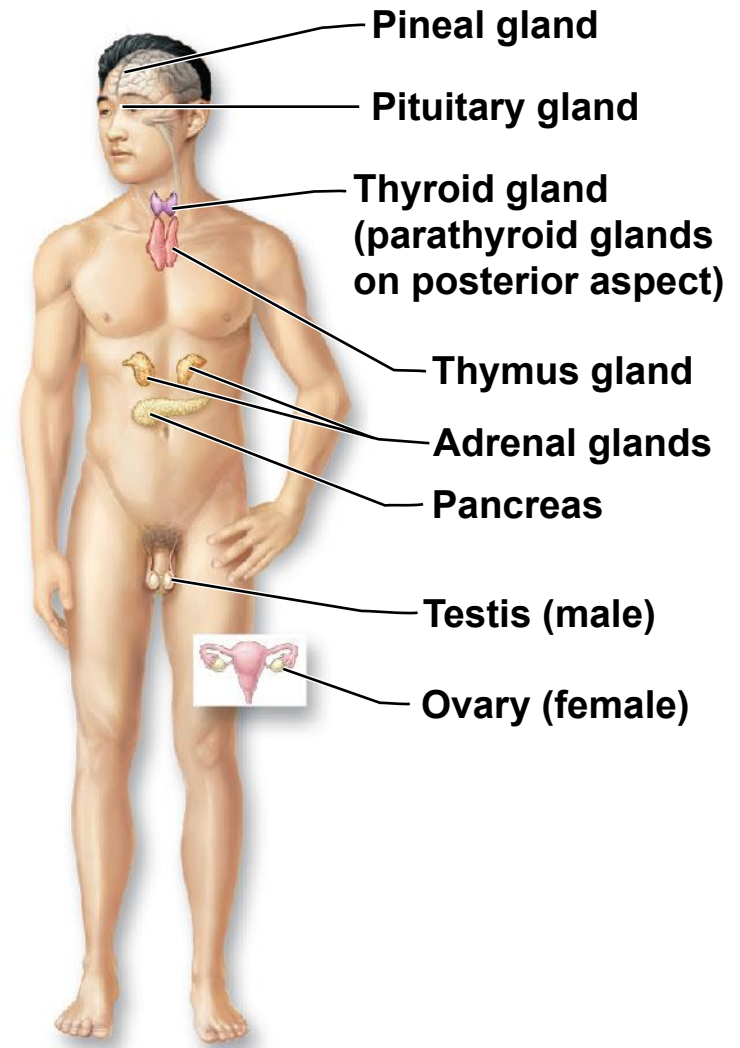
Endocrine System

- Structures

- Pineal gland, pituitary gland, thyroid gland, adrenal glands, thymus, pancreas, testes, and ovaries

- Function

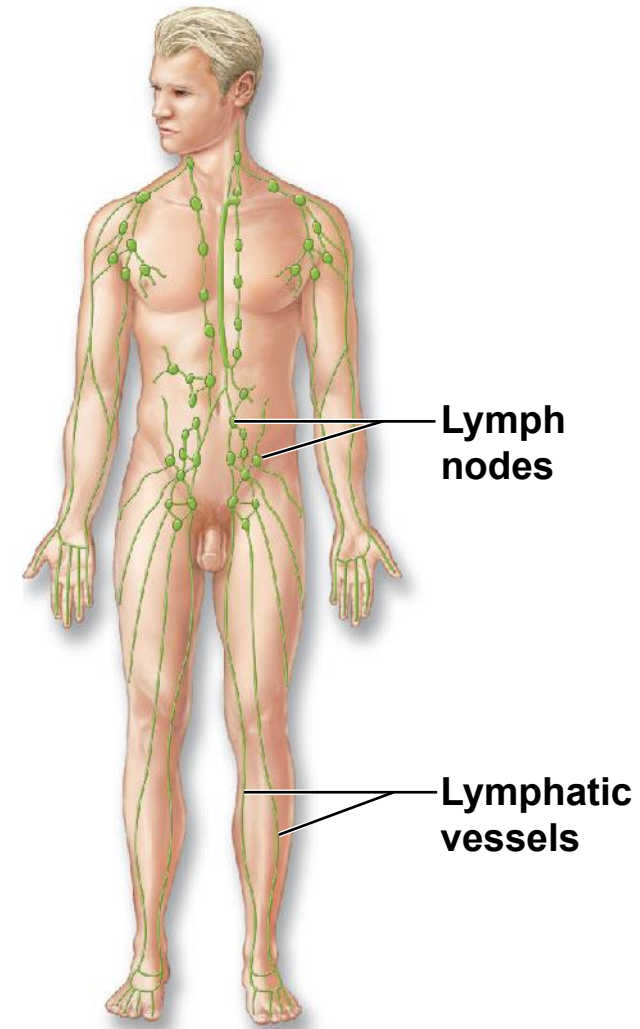
- Secretes hormones to regulate growth, reproduction and metabolism



Endocrine System

Lymphatic/Immune System

- Structures
 - Red bone marrow, lymphatic vessels, thymus, thoracic duct, and lymph nodes
- Function
 - Picks up fluid leaked from blood vessels and returns it to blood
 - Houses white blood cells



Lymphatic System

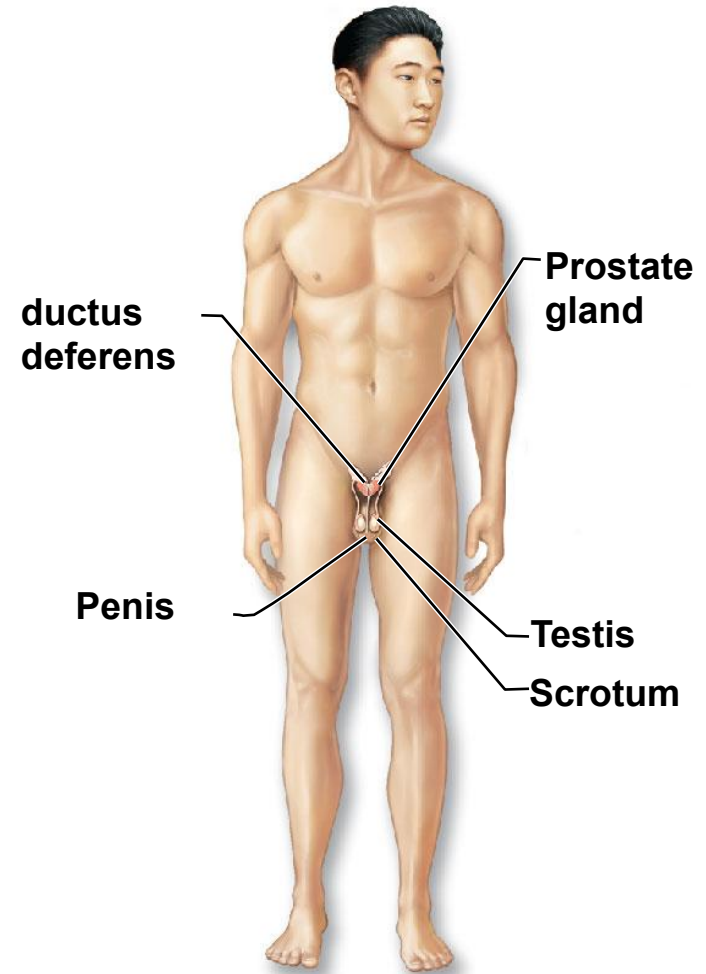
Male Reproductive System

- Structures

- Prostate gland, penis, testes, scrotum, ductus deferens

- Function

- Produce sperm
- Produce testosterone
- Delivery of sperm to female reproductive tract



(k) Male Reproductive

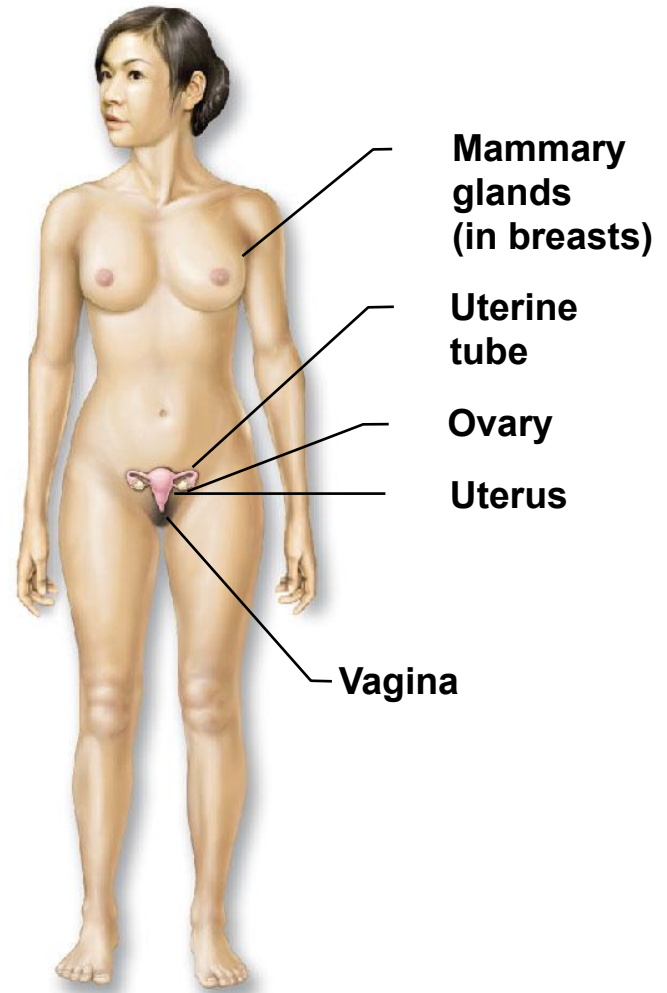
Female Reproductive System

- Structures

- Mammary glands, ovaries, uterine tubers, uterus, and vagina

- Function

- Produce eggs
- Site of fertilization and development of fetus
- Produce estrogen



(I) Female Reproductive